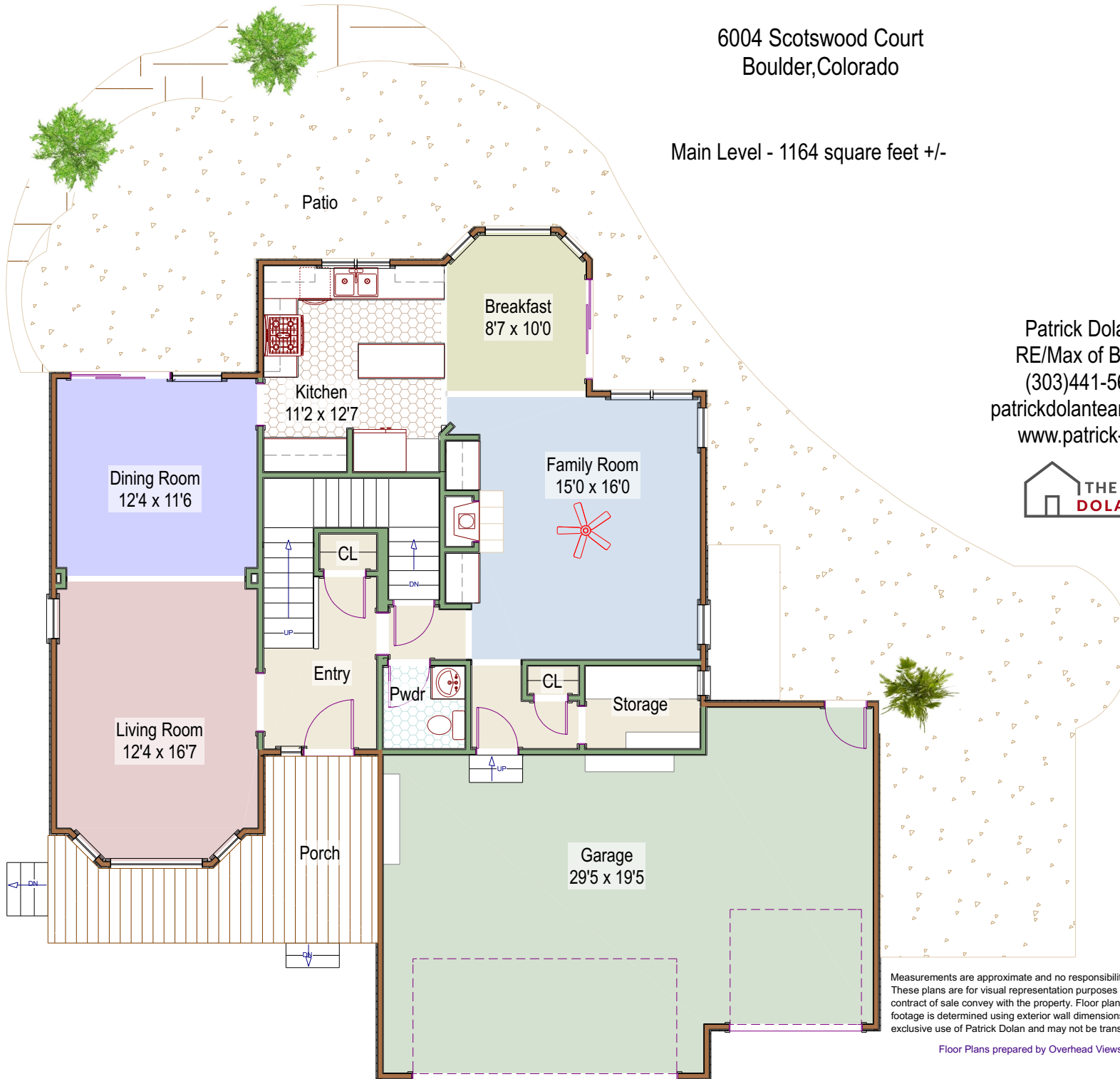
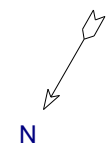


6004 Scotswood Court
Boulder, Colorado

Main Level - 1164 square feet +/-



Patrick Dolan's Office
RE/Max of Boulder, Inc.
(303)441-5642 office
patrickdolanteam@gmail.com
www.patrick-dolan.com



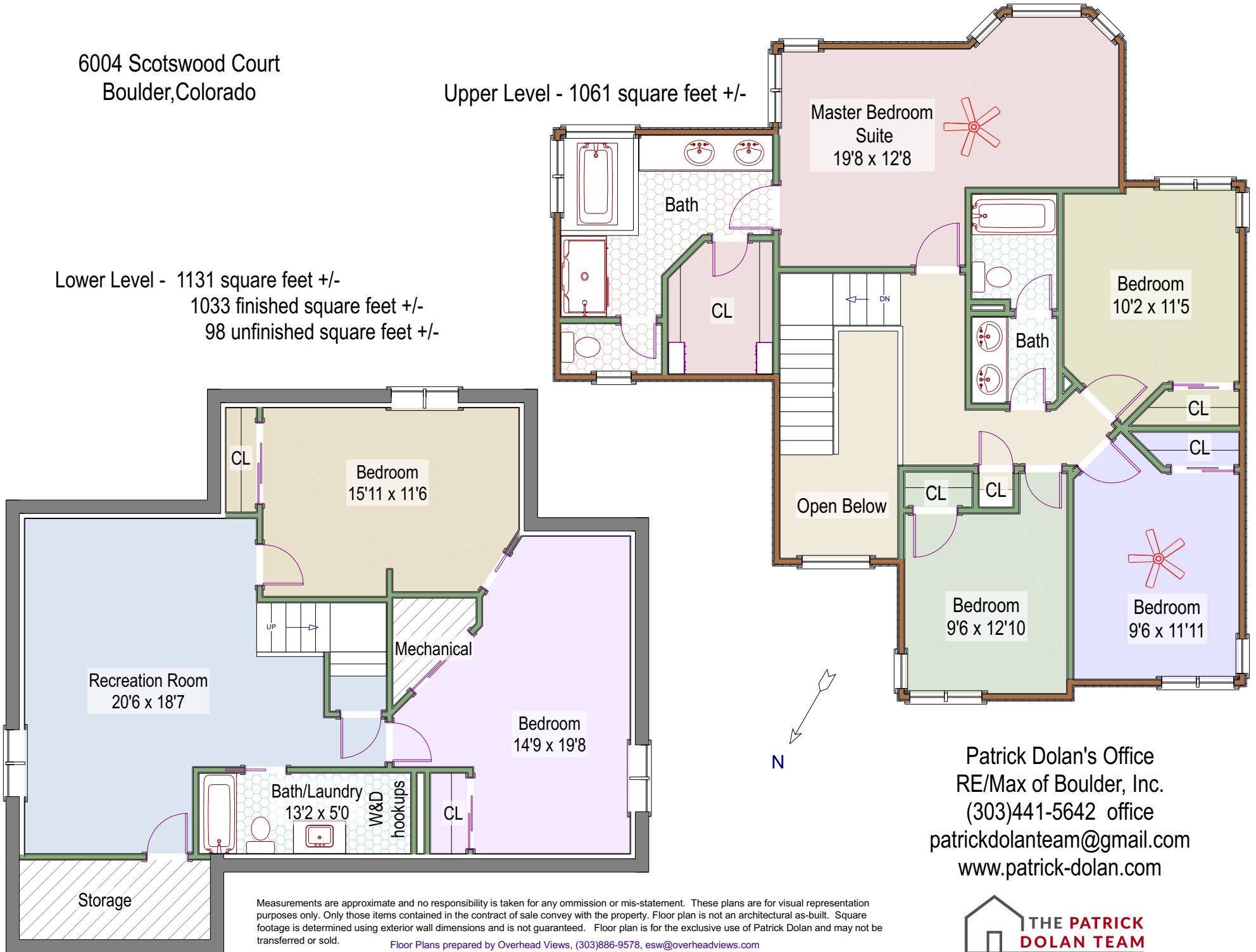
Measurements are approximate and no responsibility is taken for any omission or mis-statement. These plans are for visual representation purposes only. Only those items contained in the contract of sale convey with the property. Floor plan is not an architectural as-built. Square footage is determined using exterior wall dimensions and is not guaranteed. Floor plan is for the exclusive use of Patrick Dolan and may not be transferred or sold.

Floor Plans prepared by Overhead Views, (303)886-9578, esw@overheadviews.com

6004 Scotswood Court
Boulder, Colorado

Upper Level - 1061 square feet +/-

Lower Level - 1131 square feet +/-
1033 finished square feet +/-
98 unfinished square feet +/-



Patrick Dolan's Office
RE/Max of Boulder, Inc.
(303)441-5642 office
patrickdolanteam@gmail.com
www.patrick-dolan.com



Measurements are approximate and no responsibility is taken for any omission or mis-statement. These plans are for visual representation purposes only. Only those items contained in the contract of sale convey with the property. Floor plan is not an architectural as-built. Square footage is determined using exterior wall dimensions and is not guaranteed. Floor plan is for the exclusive use of Patrick Dolan and may not be transferred or sold.

Floor Plans prepared by Overhead Views, (303)886-9578, esw@overheadviews.com