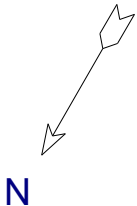


1360 North Park Drive
Lafayette, Colorado

Main Level - 1626 square feet +/-



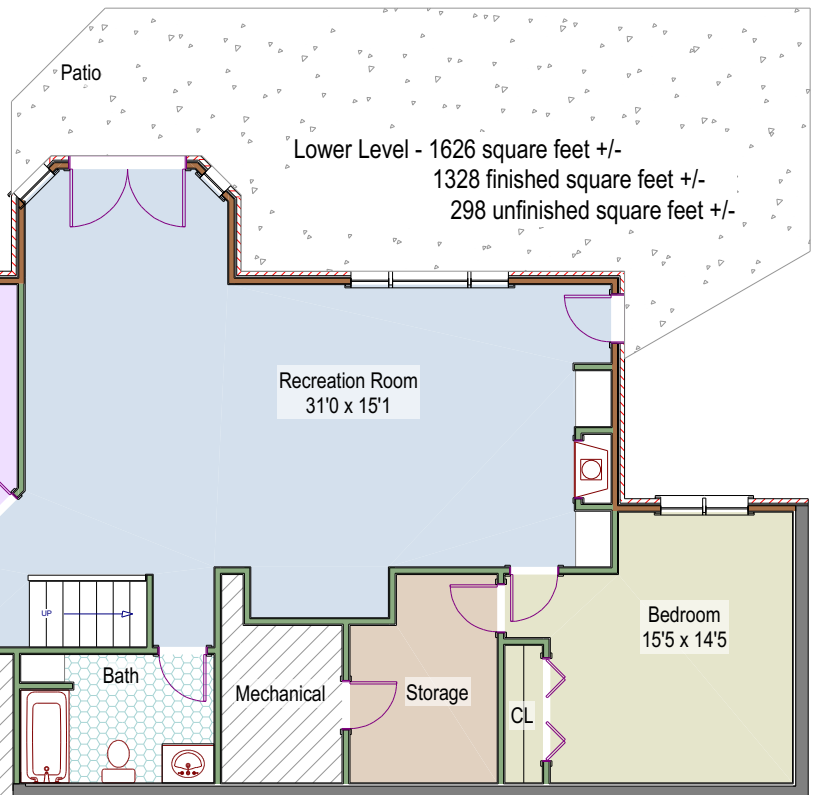
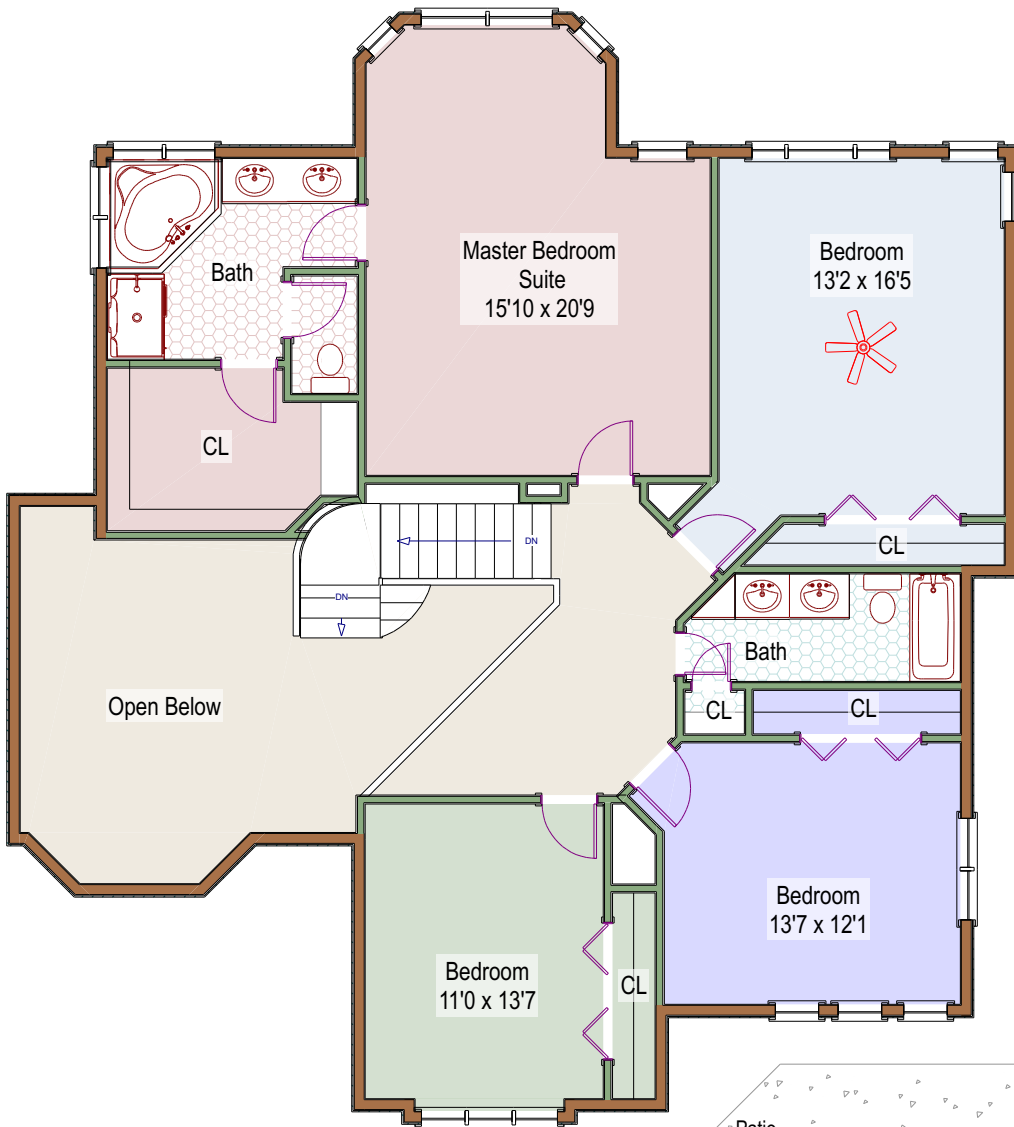
Patrick Dolan's Office
RE/Max of Boulder, Inc.
(303)441-5642 office
patrickdolanteam@gmail.com
www.patrick-dolan.com



Measurements are approximate and no responsibility is taken for any omission or mis-statement. These plans are for visual representation purposes only. Only those items contained in the contract of sale convey with the property. Floor plan is not an architectural as-built nor a survey of any kind. Square footage is determined using exterior wall dimensions and is not guaranteed. Floor plan is for the exclusive use of Patrick Dolan and may not be transferred or sold.

1360 North Park Drive
Lafayette, Colorado

Upper Level - 1515 square feet +/-



Lower Level - 1626 square feet +/-
1328 finished square feet +/-
298 unfinished square feet +/-

Patrick Dolan's Office
RE/Max of Boulder, Inc.
(303)441-5642 office
patrickdolanteam@gmail.com
www.patrick-dolan.com



Measurements are approximate and no responsibility is taken for any omission or mis-statement. These plans are for visual representation purposes only. Only those items contained in the contract of sale convey with the property. Floor plan is not an architectural as-built nor a survey of any kind. Square footage is determined using exterior wall dimensions and is not guaranteed. Floor plan is for the exclusive use of Patrick Dolan and may not be transferred or sold. Floor Plans prepared by Overhead Views, (303)886-9578, esw@overheadviews.com